



**REGIONAL SPECIALISED METEOROLOGICAL CENTRE-TROPICAL CYCLONES, NEW DELHI
TROPICAL WEATHER OUTLOOK**

DEMS-RSMC TROPICAL CYCLONES NEW DELHI DATED 12.06.2021

TROPICAL WEATHER OUTLOOK FOR NORTH INDIAN OCEAN (THE BAY OF BENGAL AND ARABIAN SEA) VALID FOR NEXT 120 HOURS ISSUED AT 0600 UTC OF 12.06.2021 BASED ON 0300 UTC OF 12.06.2021.

BAY OF BENGAL:

YESTERDAY'S LOW PRESSURE AREA OVER NORTHWEST BAY OF BENGAL & ADJOINING ODISHA & WEST BENGAL COASTS LAY OVER NORTHWEST BAY OF BENGAL & ADJOINING WEST BENGAL & ODISHA, AT 0300 UTC OF TODAY, THE 12TH JUNE, 2021.

IT IS LIKELY TO BECOME MORE MARKED AND MOVE WEST-NORTHWESTWARDS ACROSS ODISHA, JHARKHAND & NORTH CHATTISGARH DURING NEXT 2-3 DAYS.

SCATTERED LOW AND MEDIUM CLOUDS WITH EMBEDDED INTENSE TO VERY INTENSE CONVECTION LAY OVER NORTHWEST BAY OF BENGAL (MINIMUM CLOUD TOP TEMPERATURE MINUS 93°C) AND MODERATE TO INTENSE CONVECTION LAY OVER COASTAL ODISHA & NEIGHBOURHOOD IN ASSOCIATION WITH LOW LEVEL CIRCULATION OVER THE AREA.

SCATTERED TO BROKEN LOW AND MEDIUM CLOUDS WITH EMBEDDED INTENSE TO VERY INTENSE CONVECTION LAY OVER NORTH & CENTRAL BAY OF BENGAL. SCATTERED LOW AND MEDIUM CLOUDS WITH EMBEDDED MODERATE TO INTENSE CONVECTION LAY OVER SOUTH BAY OF BENGAL AND ANDAMAN SEA.

PROBABILITY OF CYCLOGENESIS (FORMATION OF DEPRESSION) DURING NEXT 120 HRS):

24 HOURS	24-48 HOURS	48-72 HOURS	72-96 HOURS	96-120 HOURS
NIL	NIL	NIL	NIL	NIL

ARABIAN SEA:

SCATTERED TO BROKEN LOW AND MEDIUM CLOUDS WITH EMBEDDED INTENSE TO VERY INTENSE CONVECTION LAY OVER EASTCENTRAL ARABIAN SEA. SCATTERED LOW AND MEDIUM CLOUDS WITH EMBEDDED MODERATE TO INTENSE CONVECTION LAY OVER SOUTHEAST ARABIAN SEA.

PROBABILITY OF CYCLOGENESIS (FORMATION OF DEPRESSION) DURING NEXT 120 HRS):

24 HOURS	24-48 HOURS	48-72 HOURS	72-96 HOURS	96-120 HOURS
NIL	NIL	NIL	NIL	NIL

REMARKS:

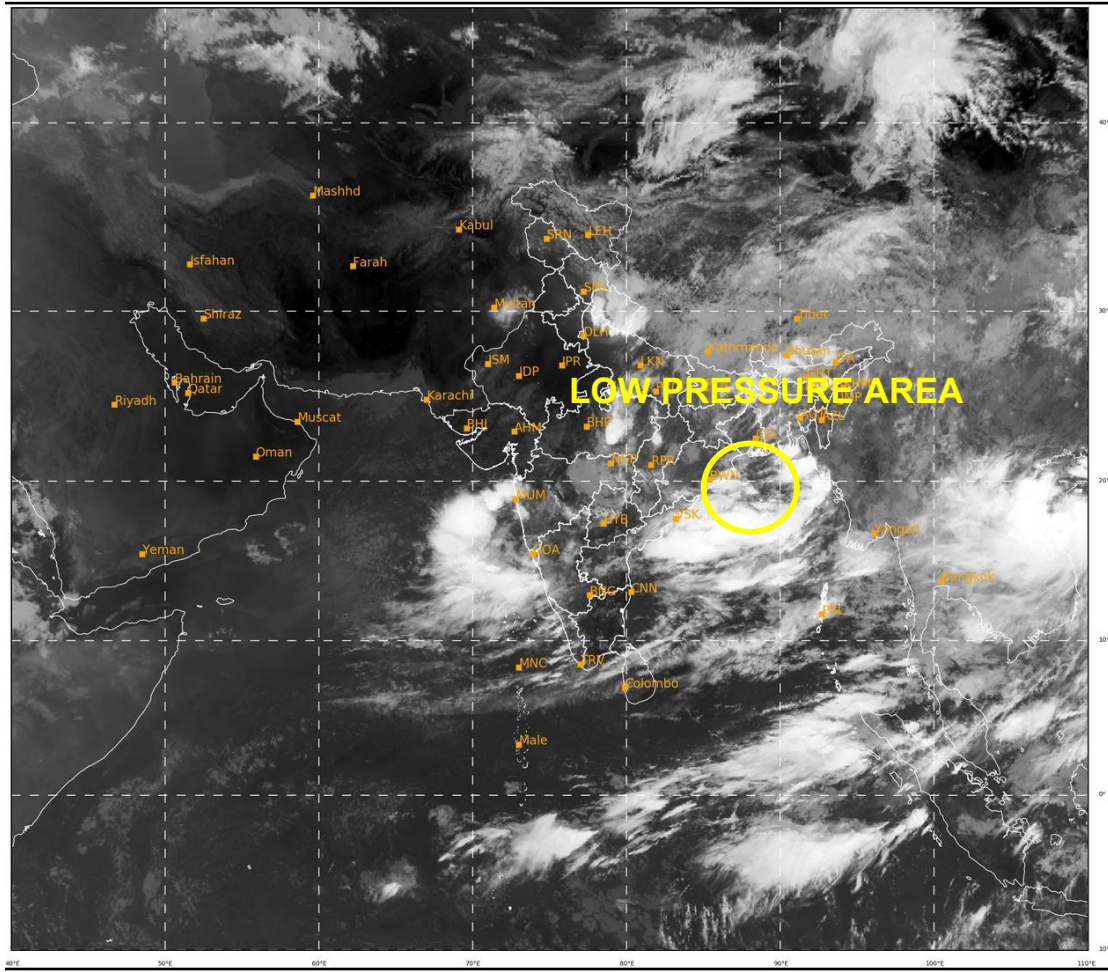
THE MADDEN JULIAN OSCILLATION (MJO) INDEX IS CURRENTLY IN PHASE 1 WITH AMPLITUDE MORE THAN 1. IT WILL MOVE TO PHASE 2 FROM 13TH ONWARDS AND WILL CONTINUE IN SAME PHASE DURING NEXT 2 DAYS WITH AMPLITUDE NEAR 1. MJO PHASE IS CURRENTLY NOT FAVOURABLE FOR ENHANCEMENT OF CONVECTIVE ACTIVITY OVER THE BAY OF BENGAL. ZONE OF POSITIVE VORTICITY PERSISTS OVER NORTHWEST BOB & ADJOINING WESTCENTRAL BOB ($80-100 \times 10^{-6} S^{-1}$). POSITIVE VORTICITY IS EXTENDING UPTO 500 HPA LEVEL. LOW LEVEL CONVERGENCE IS POSITIVE ($5-10 \times 10^{-5} S^{-1}$) OVER NORTH BOB. UPPER LEVEL DIVERGENCE IS POSITIVE ($5-10 \times 10^{-5} S^{-1}$) OVER CENTRAL PARTS OF BOB.

CONSIDERING THE MODEL GUIDANCE, GFS GROUP IS NOT INDICATING DEVELOPMENT OF ANY CYCLONIC DISTURBANCE OVER THE BOB DURING THE FORECAST PERIOD. HOWEVER, ECMWF AND NCUM AND GEFS ARE INDICATING THE LOW PRESSURE AREA TO BECOME MORE MARKED AND MOVE WEST-NORTHWESTWARDS DURING NEXT 2-3 DAYS.

CONSIDERING ALL THE ABOVE, THERE IS NIL PROBABILITY OF CYCLOGENESIS OVER BOB DURING DURING THE FORECAST PERIOD.

SAT : INSAT-3D IMG
IMG_TIR1 10.8 um
LIC Mercator

12-06-2021/(0300 to 0326) GMT
12-06-2021/(0830 to 0856) IST



399

945

IMD, DELHI